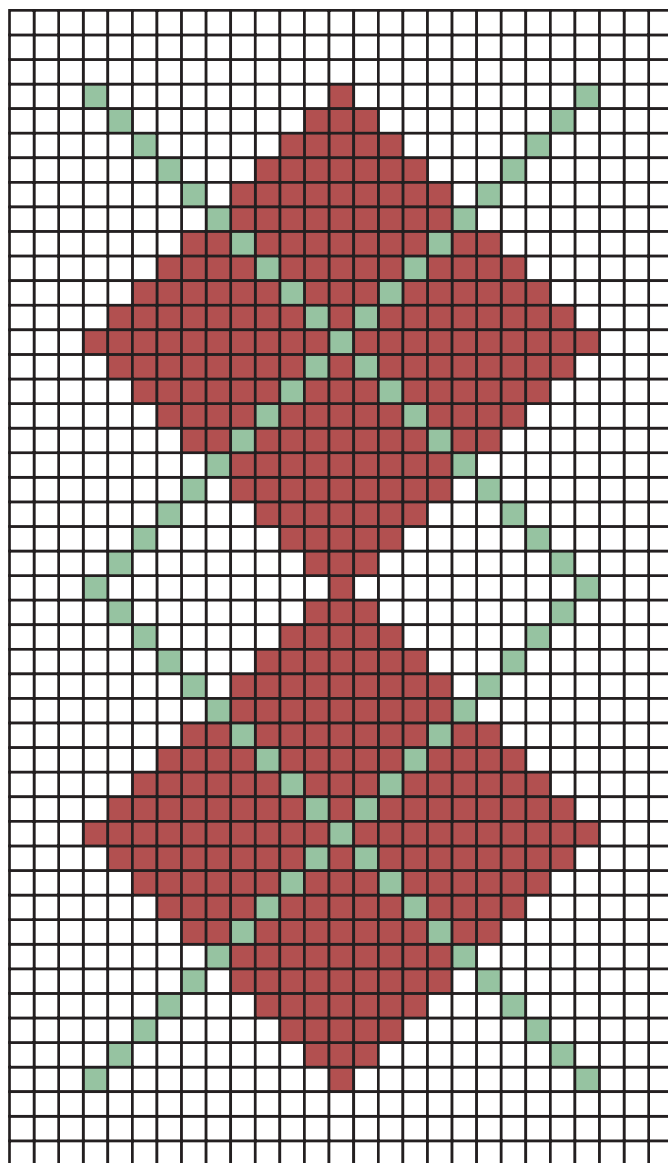
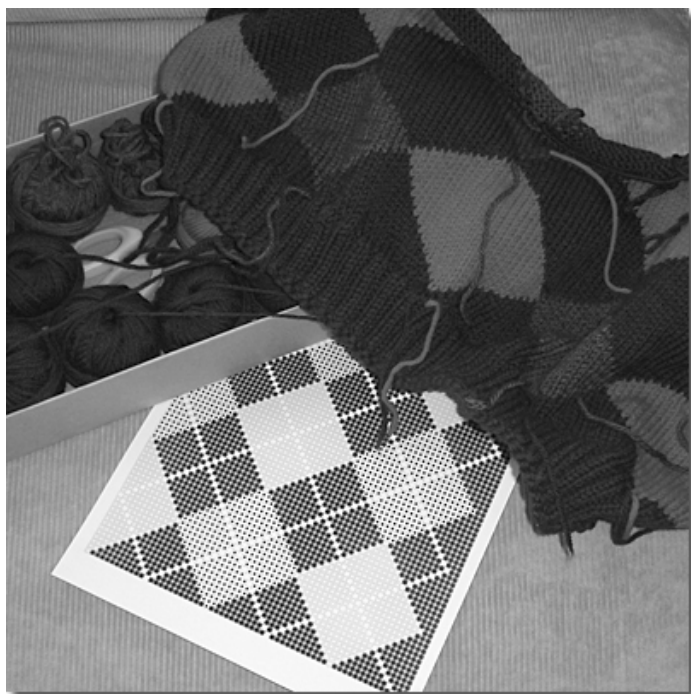


Classic Argyle

Intarsia is a method of laying in areas of color in knitting using separate yarn sources for each color change. Argyle is classically knit using this technique. An excellent source for refining intarsia technique is Intarsia—A Workshop for Hand & Machine Knitting from the studio of Sealed with a Kiss (Sherry and Keely Stuever).



The chart on the right can be used to knit a test swatch. Knit only the light and dark colors. Work the medium accent stripes using duplicate stitch.

Starting a new color, changing colors in a row, and working in yarn ends are covered in the workshop in S.W.A.K.s *Intarsia* book.